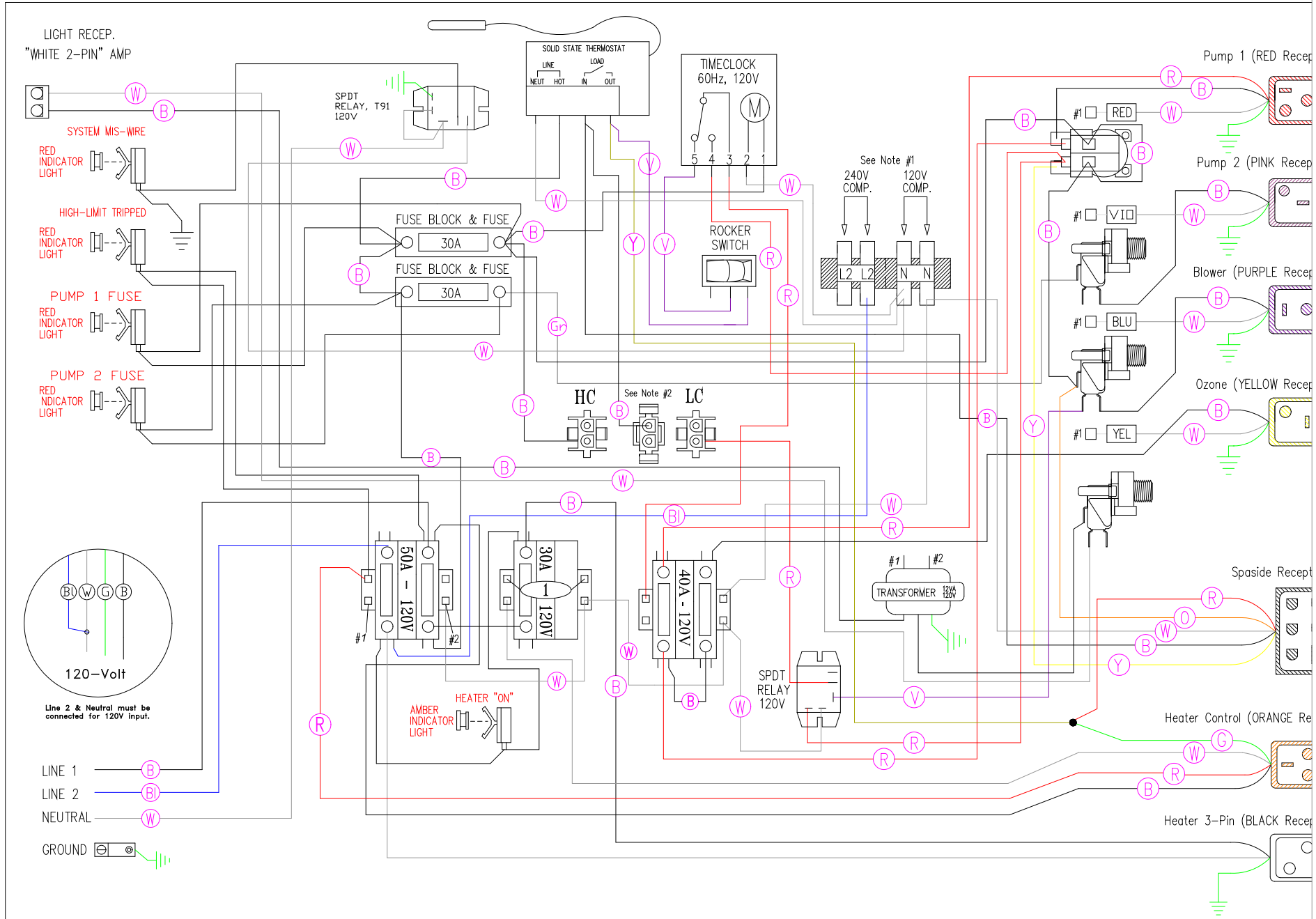


Hydro-Quip

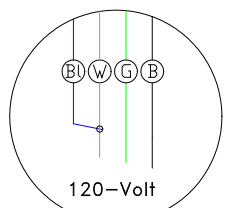
Manufacture Notes: #1 - Universal System, connecting the White/Component receptacle wire to the corresponding position on the Universal Terminal Block determines component voltage.
 #2 - Low Current (heater off w/high-speed pump or blower) or High Current (no heater restriction)

Dwg. No.	506G0-DKS5	Drawn	BH	Rev	3	Wire Color Code B - Black G - Green Br - Brown Bl - Blue R - Red V - Violet O - Orange W - White Y - Yellow Gr - Gray
Date	05.19.05					
Diagram No.	7027					



LIGHT RECEP.
"WHITE 2-PIN" AMP

- RED INDICATOR LIGHT
- RED INDICATOR LIGHT
- RED INDICATOR LIGHT
- RED INDICATOR LIGHT



Line 2 & Neutral must be connected for 120V input.

- LINE 1
- LINE 2
- NEUTRAL
- GROUND

Hydro-Quip

Manufacturer Notes: #1 Universal System connecting the White/Component receptacle wire to the corresponding position on the Universal Terminal Block

Dwg. No.	506G0-DKS5	Drawn	BH	Rev	3	Wire Color
Date	07-10-07					B - Black